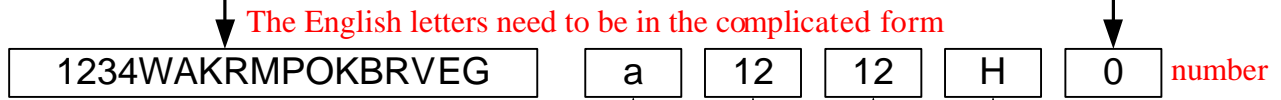


The Dip Switch need to be set on 0 since it is the retaining value set by the original factory in order to keep it function normally.

	Dip Switch		
Hardware Data Rate	2	3	4
1200	0	0	0
2400	0	0	1
4800	0	1	0
9600	0	1	1
19200	1	0	0
38400	1	0	1
57600	1	1	0
115200	1	1	1

# <User Guide>

Set by original factory



a Write in EEPROM instructions  
b Read out EEPROM instructions

The ID numbers of the main computer  
You can use both the numbers and the English letters.

The ID numbers of the other computers.  
You can use both the numbers and the English letters.

Frequency Setting  
Choose one of the numbers or English letters as shown in the picture

H = 2.424GHz

Frequency Setting Table

Complicated Form	Matching Frequency	Complicated Form	Matching Form
A	2.417GHz	N	2.430GHz
B	2.418GHz	O	2.431GHz
C	2.419GHz	P	2.432GHz
D	2.420GHz	Q	2.433GHz
E	2.421GHz	R	2.434GHz
F	2.422GHz	S	2.435GHz
G	2.423GHz	T	2.436GHz
H	2.424GHz	U	2.437GHz
I	2.425GHz	V	2.438GHz
J	2.426GHz	W	2.439GHz
K	2.427GHz	X	2.440GHz
L	2.428GHz	Y	2.441GHz
M	2.429GHz	Z	2.442GHz

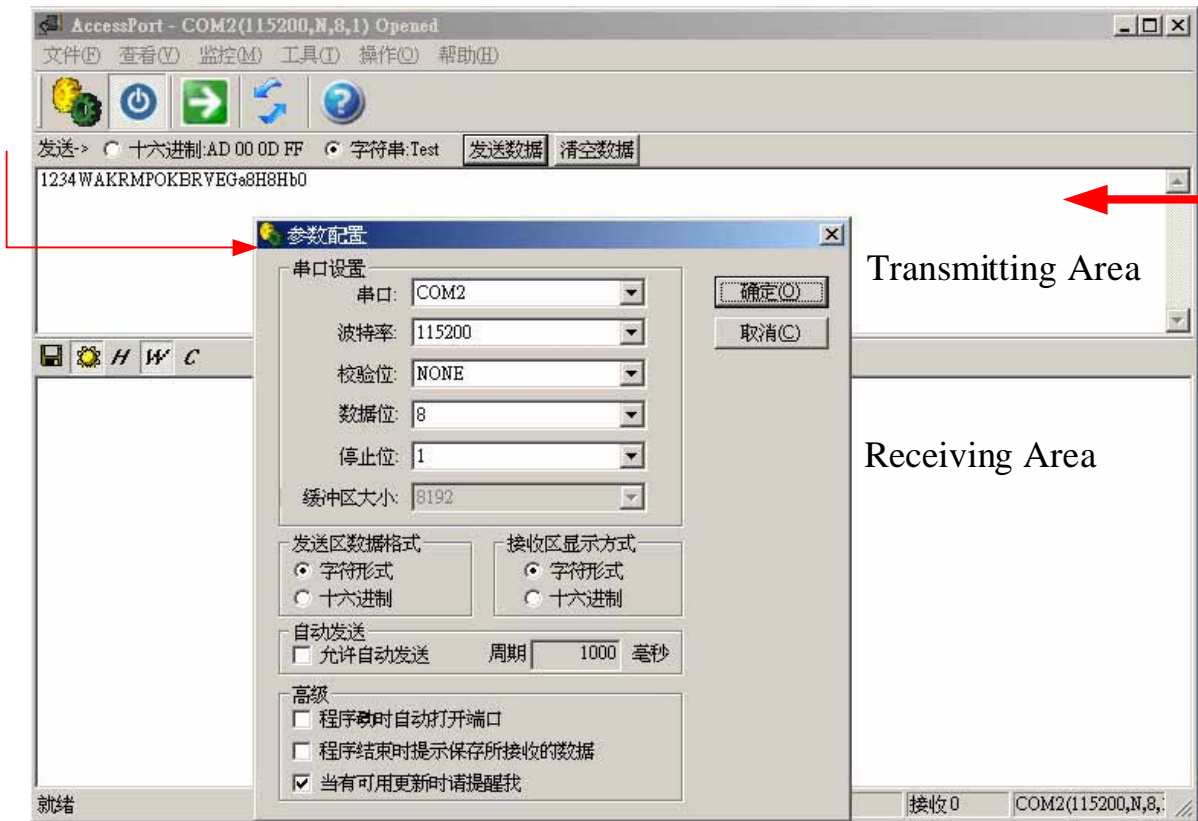
Simple Form	Matching Form	Simple Form	Matching Form
a	2.449GHz	n	2.462GHz
b	2.450GHz	o	2.463GHz
c	2.451GHz	p	2.464GHz
d	2.452GHz	q	2.465GHz
e	2.453GHz	r	2.466GHz
f	2.454GHz	s	2.467GHz
g	2.455GHz	t	2.468GHz
h	2.456GHz	u	2.469GHz
I	2.457GHz	v	2.470GHz
j	2.458GHz	w	2.471GHz
k	2.459GHz	x	2.472GHz
l	2.460GHz	y	2.473GHz
m	2.461GHz	z	2.474GHz

Value	Matching Form
0	2.4GHz
1	2.401GHz
2	2.402GHz
3	2.403GHz
4	2.404GHz
5	2.405GHz
6	2.406GHz
7	2.407GHz
8	2.408GHz
9	2.409GHz

# Example 1

When used in one on one transmission, set the ID of the main computer the same as the other computers. The way of setting the ID as 8H and frequency as 2.45 GHz is as below:

1234WAKRMPOKBRVEG	a	8H	8H	b	0
-------------------	---	----	----	---	---



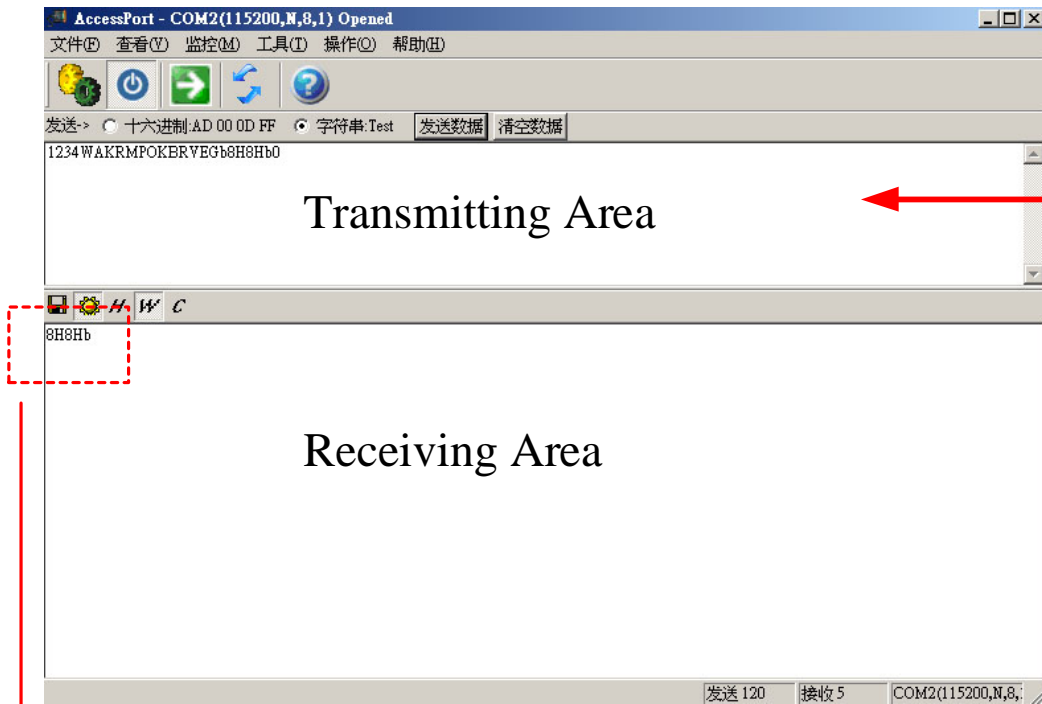
**This program supports both English and Chinese version.  
Pls see the picture as below for reference.**



## Example 2

When you finish burning the codes, read out the correct parameter as below:

1234WAKRMPOKBRVEG	b	8H	8H	b	0
-------------------	---	----	----	---	---



Press the "Send" button. Then the receiving area will show the data that was burned in. (8H8Hb)